

**NITTE**



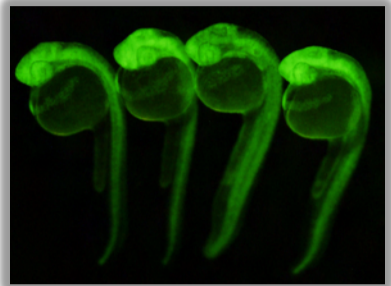
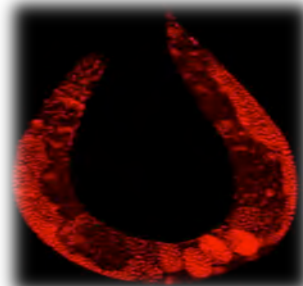
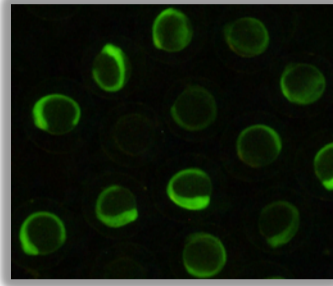
Government of India  
Department of Science & Technology  
Ministry of Science & Technology



**Department of Science and Technology  
(DST), Govt. of INDIA**

**&  
Japan Society for the Promotion of Science  
(JSPS), Govt. of JAPAN**

**Sponsored**



## **International Meeting on Non-Mammalian Models in Biomedical Research: Current Status and Future Perspectives**

### **Dates**

**5-6 October 2017**

### **Venue**

**Nitte University  
Central Auditorium  
Paner Campus, Mangalore**

### **Registration**

**Early: 1 Aug-31 Aug 2017  
Late: 1 Sep-15 Sep 2017**

### **Contact**

**Dr. Anirban Chakraborty**  
☎: 7022129624  
✉: [anirban@nitte.edu.in](mailto:anirban@nitte.edu.in)

### **About the meeting**

In recent years, the field of biomedical research has seen an upward surge in the use of alternative animal models (lower vertebrates and invertebrates) by the scientists and researchers to limit/avoid the use of mammalian models. The main objective of this meeting is to explore the current progress and future challenges of use of non-mammalian models in biomedical research by bringing in experts from **India** and **Japan** under one roof.

### **Sessions on:**

- ✚ Disease Modeling
- ✚ Toxicology
- ✚ Organ Regeneration and Cell Signaling
- ✚ Functional Genomics
- ✚ Pharmacology

### **Invited Talks and Poster Session !**

### **Distinguished Speakers from Premiere Research Institutes in India and Japan !**

**For Registration and Other Details,  
visit**

**<http://nucser.nitte.edu.in/IMNMBR-2017>**

**[nucser.nitte.edu.in](http://nucser.nitte.edu.in)**

**@NitteCSER**

**NITTE**

**Nitte University Centre for Science Education & Research  
Nitte University**